



CUTTING EDGE CUSTOMS INSPECTION

The HXP-FreightScan Plus™ is a high-energy portal designed for screening trucks and shipping containers at seaports, border crossings, and cargo centers. The portal is fully automated and can process up to 160 trucks an hour. Its precision software allows drivers to remain in their vehicles during screening and with a tunnel height of over five meters (16.7 ft.), even oversized cargo can be scanned.

The system is powered by a powerful linac generator capable of penetrating up to 340 mm (13.4") of steel. Its clear, high-resolution images make it easy for operators to identify threats and verify manifests, while its rugged construction ensures cost-effective operation.

The HXP-FreightScan Plus™ supports a host of third-party systems allowing for extensive customizations that augment its screening objectives. Third-party integrations offer critical inspection benefits. They can expedite screenings at congested checkpoints, monitor and control entry and exit points, collect vehicle and cargo data, and maintain operational efficiency at every stage of the process. Integrations may include, while not limited to: container readers, radiation portal monitors, weighbridges, license plate readers and centralized command centers.

Proudly manufactured in the United States to the highest quality standards, the HXP-FreightScan Plus™ ruggedized design can withstand harsh climates found at ports of entry around the world.

PRODUCT HIGHLIGHTS

340 mm Steel Penetration

High Resolution Image

Throughput: 160 Trucks
Per Hour

Fully-Automated Drive
Through Portal

HXP-FreightScan Plus™

TOMORROW'S TECHNOLOGY FOR TODAY'S SECURITY™



GENERAL SPECIFICATIONS

Tunnel Size: (WxH)	3.75 m x 5.10 m 147.6" x 200.8"
Max Vehicle Size: (WxH)	3.5 m x 5.0 m 137.8" x 196.9"
Dimensions ¹ : (LxWxH)	4.7 m x 7.5 m x 5.5 m 185.0" x 295.3" x 216.5"
Scanning Speed:	3.2 km/hour (1.9 mph) Nominal 15 km/hour (9.3 mph) Capable
Throughput ² :	160 trucks/hour

TECHNICAL

Steel Penetration:	340 mm Typical, 320 Standard
--------------------	------------------------------

X-RAY GENERATOR & IMAGE PERFORMANCE

Source:	Linac
Energy:	4 MeV / 6 MeV
Beam Direction:	Horizontally Sideward
X-Ray Dose:	0.1 µSv/inspection

COMPUTER & VIDEO

Platform:	Windows® OS
Display Type:	Dual 28" Flat Panel Color Monitors; One 19" Color Monitor
Display Resolution:	4K Resolution

ENVIRONMENTAL

Operating Temperature:	-30°C to 50°C / -22°F to 122°F
Storage Temperature:	-30°C to 60°C / -22°F to 140°F
Humidity:	Up to 95% non-condensing

ELECTRICAL

System Power:	380 VAC, 50Hz, Three Phase 40kVA
---------------	----------------------------------

HEALTH & SAFETY

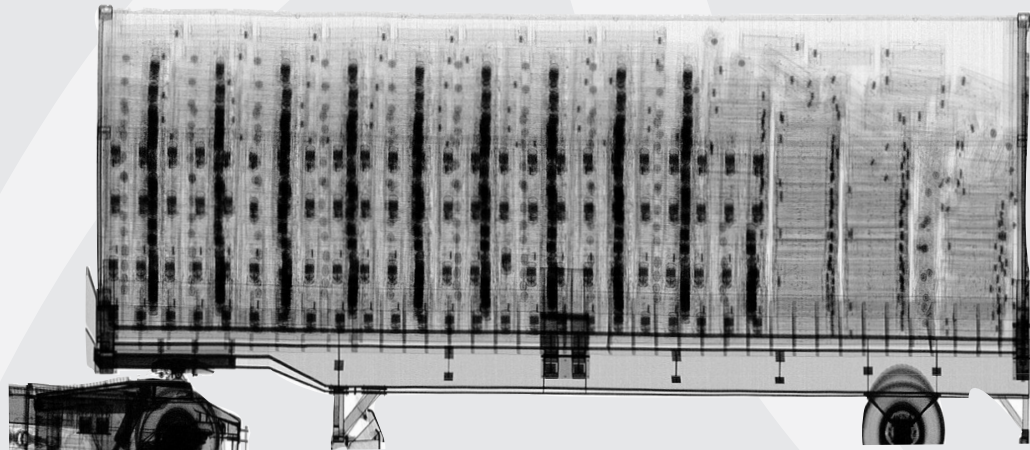
In compliance with ANSI N43.17 for screening of personnel with x-rays. In compliance with ICRP 103, Paragraph 2 of Article 13 of EU Council Directive 96/29/EURATOM, and United States EPA public exposure limits. In compliance with United States FDA and WHO food screening limits. Typical radiation leakage is 0.003 mSv to cargo and 0.06 usv to the cab (drivers).

STANDARD FEATURES

Black/White Imaging	Multi-Tier Accessibility
Picture Perfect	Network Ready
Pseudo Color	Real-Time Self Diagnostics
Reverse Monochrome	_____
_____	CCTV Camera System
Continuous Zoom Up to 64x	Inspection Workstation
_____	Operator Workstation
Auto Image Archiving	Speedometer
Image Review	Traffic Signals
Management System	Vehicle Counter
Manual Bitmap Archive	_____
_____	Image Annotation
_____	Print Image Capable

OPTIONAL FEATURES³

Higher Archiving Capacity	Additional Analyst Workstations
Local Language	Container Plate Reader
_____	Custom Paint
Material Discrimination:	Environmental Kit
1) 2 Color (Organic/Metal)	Inspection Office
2) 3 Color (Organic/Metal/High-Z)	Operator Training
Radioactive Material Detector	Radiation Meter
_____	Truck Plate Reader
TotalScan™ Mode:	_____
Option to safely scan driver cabin and container	Third-Party Systems ⁴ :
_____	Container Readers
_____	Radiation Portal Monitors
_____	Weighbridges
_____	License Plate Readers
_____	Centralized Command Center



Astrophysics HQ
+1.909.598.5488

Astrophysics - EMEA
+961.9.832.500/1/2

Astrophysics - INDIA
+91.11.41709990

Astrophysics - ASIA
+63.2.812.0033

ISO 9001 & ISO 14001: Certified

¹Weight and dimensions of the system may vary depending on customization. Weight does not include shield walls.

²Throughput is an estimated maximum vehicle count. Actual throughput will depend on system and site configuration.

³Optional features may affect lead time, price, and weight of system. Please contact your Astrophysics Sales Representative for more information.

⁴Not an exhaustive list, please contact your Astrophysics Sales Representative for more information.

⁵As tested on astrophysics test piece.

Due to continued product research and development, Astrophysics Inc. reserves the right to amend all technical specifications without prior notice.

